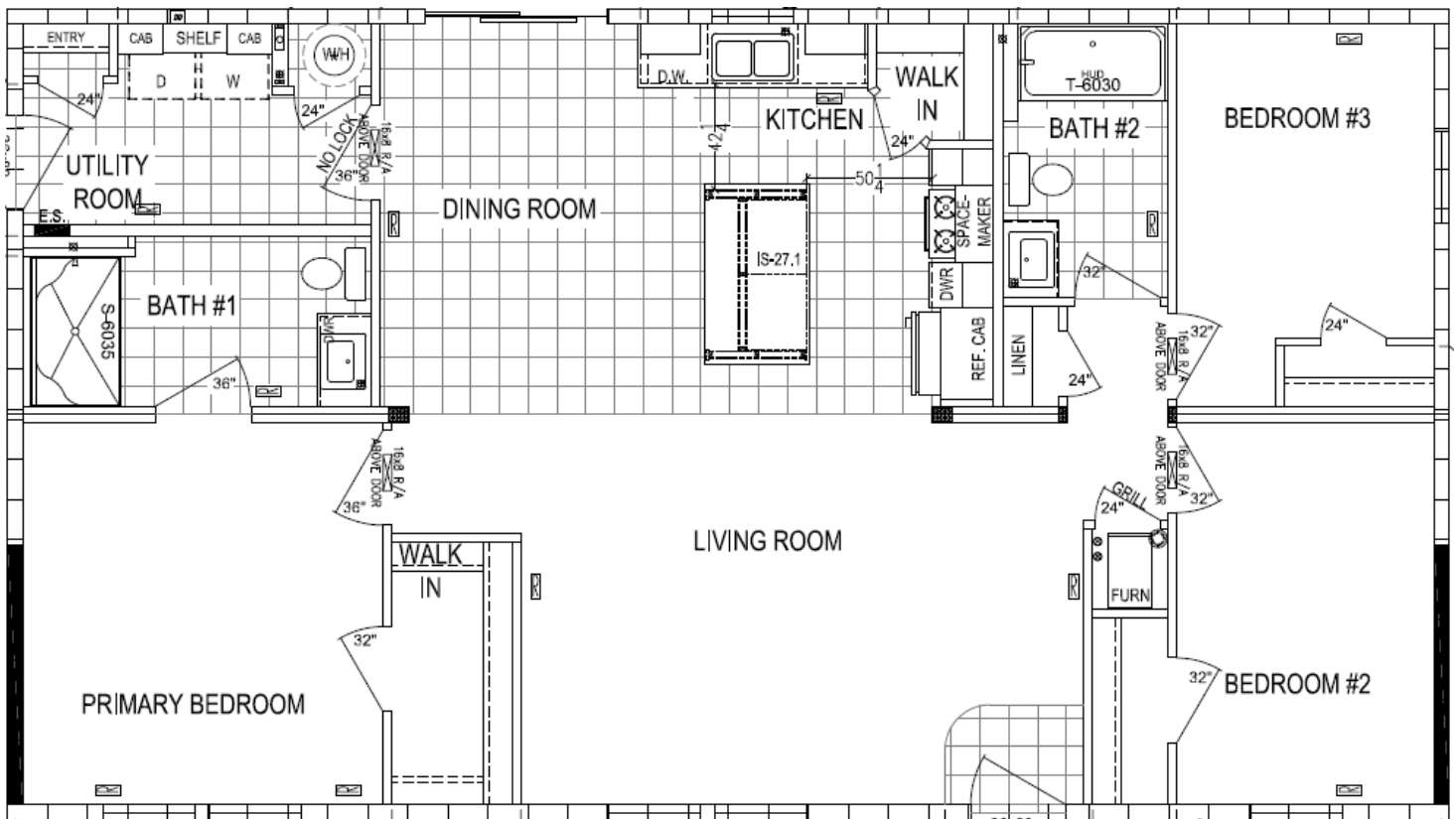




ROOSEVELT

3 Bed, 2 Bath 1,296 sq ft 27' x 48'



FEATURES

- Smart Board Window Surround in place of Standard Shutters
- 30# Roof Load
- Guest/Entrance Closet
- Hall Linen Closet
- 36" 9-Lite Front Door
- Vinyl Sliding Patio Door - Dining Room
- Lux Linoleum - Harbor Light
- 2" Cordless Vinyl Blinds
- Water Heater Close-Off Door
- White Painted Pine Trim
- Black Lever Locksets Throughout
- R-40 Roof Insulation
- Fiberglass Heat Duct with In-Floor Crossovers
- Carrier Hi-E Gas Furnace
- 21 CF Top/Bottom Refrigerator - Black
- 1.5 CF Spacemaker Microwave - Black
- Dishwasher - Black
- USB Port and Receptacle in Kitchen
- Ceiling Fan with Light - Living Room
- Schoolhouse Bath Vanity Light - Baths 1 & 2
- Schoolhouse Pendant Lights over Island
- LED 6" Recessed Can Light - Bath 1 Shower
- Gooseneck Kitchen Faucet - Black
- Fiberglass Tub/Shower Faucet - Brushed Nickel
- Matte Black Upgraded Lav Faucet in Master Bath
- Stile Framed Bath Mirror
- 60" Fiberglass Shower
- Bank of Drawers for Bath Vanity
- Black Handles Throughout Kitchen
- Option Kitchen Layout with Walk-In Pantry
- Platinum Flat Panel 42" Overhead Cabinets w/ Hardwood Stiles, Ceiling Molding, Mullion & Under Cabinet Trim - White Linen
- Refrigerator Overhead Cabinet - White Linen
- Optional Kitchen Island - White Linen
- Laundry Overhead Cabinet - White Linen

Standard Features:

- 8' Flat Ceiling Joints Finished Throughout
- Taped Ceiling Joints
- 1/2" Drywall Throughout
- Builder Grade Primer Throughout
- ClosetMaid Ventilated Wire Shelving in Closets
- MDF 2" Door & Window Casing w/ 3" Base Trim
- 2 Panel White Interior Doors
- 32" Interior Doors Where Applicable
- Hardwood Cabinet Doors
- Concealed European Style Countersunk Hinges
- 3/4" Adjustable Shelves in Overhead Cabinets
- Fixed Center Shelf in Base Cabinets
- Laminate Countertops Throughout
 - Kitchen - Andorra Fog
 - Kitchen Island - Black Alicante
 - Baths 1 & 2 - Marmo Bianco
- Shaw Carpet with 5# Rebound Pad Tack Strip
- Stainless Steel Double Bowl Kitchen Sink
- Frigidaire 30" Freestanding Electric Range
- Recessed Can Lights in Kitchen
- Elongated Porcelain Commodes
- Square Porcelain Lavs
- Lighted Power Exhaust Fans
- 36" Tall Vanities in all Baths
- Metal Faucets with Anti-Scald
- Zone III Insulation Package
 - R-28 Blown Ceiling Insulation with Vapor Barrier
 - R-19 Fiberglass Insulation in Walls
 - R-11 Fiberglass Insulation in Floors
 - Metal Heat Ducts
- Nominal 3/12 Roof Pitch
- 25 Year CertainTeed XT Fiberglass Shingles in Weather Wood
- 36" 6 Panel Rear Door with Deadbolt
- 200 Amp Service Panel 20/40 Box
- Electric Carrier Furnace
- Ecobee 5 WiFi Thermostat
- 40 Gallon Electric Water Heater
- PEX Plumbing
- Wireless Doorbell
- 23/32 T&G OSB Floor Decking Glued & Fastened
- 2" x 6" Exterior Walls - 16" O.C.
- Linked Smoke Detectors with Battery Back Up
- 7/16" OSB Exterior Sheathing with Windwrap



All American
Dream Homes, Inc.
CUSTOM BUILDERS