

# WASHINGTON



## PERSONALIZE YOUR HOME

- Vaulted Ceiling in Main Living Room
- Patio Door off Dining Room
- Soft Close Pocket Door off Utility Room
- Kitchen Backsplash
- Open Locker with Cubbies in Utility Room
- Shown with Front Porch Option

**3 Bedroom**

**2 Bath**

**1512 sq. ft.**

**1 Story**

**Depth: 28'**

**Length: 54'**



WISCONSIN



Option



**888-582-4421**

**[www.AllAmericanDreamHomes.com](http://www.AllAmericanDreamHomes.com)**



[/allamericandreamhomes](https://www.facebook.com/allamericandreamhomes)

[@allamericandreamhomes](https://www.instagram.com/allamericandreamhomes)



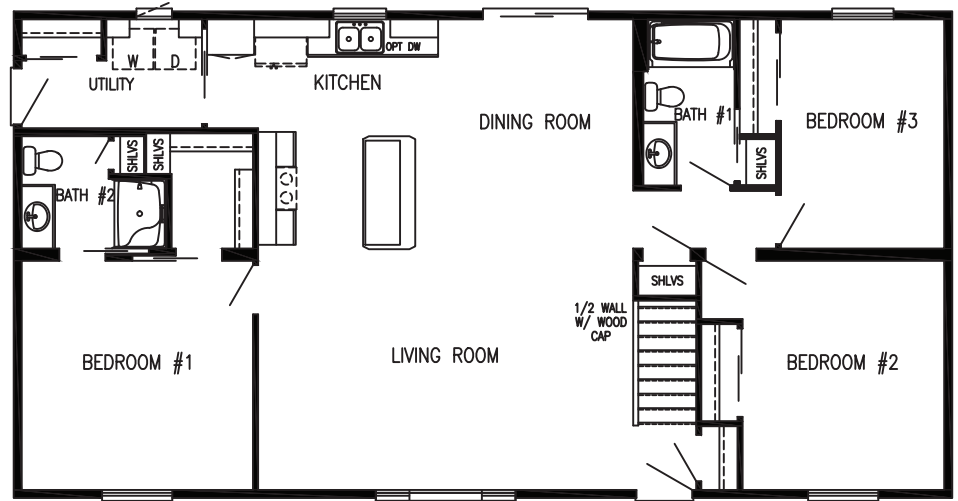
[All American Dream Homes](https://www.youtube.com/AllAmericanDreamHomes)

[@allamericandreamhomes](https://www.twitter.com/allamericandreamhomes)

# WASHINGTON FLOOR PLAN

## FEATURES

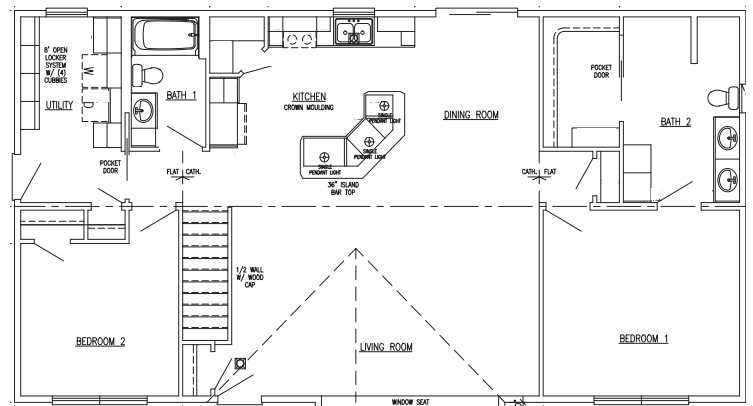
- 36" Interior Doors
- Home Offers Lots of Storage
- Can be Completely Personalized for Your Lifestyle



Final plans approved by builder and homebuyer take precedence over and may differ from artwork



## 2 BEDROOM W/ OPT. KITCHEN LAYOUT



W I S C O N S I N



Option



888-582-4421

[www.AllAmericanDreamHomes.com](http://www.AllAmericanDreamHomes.com)

All American Dream Homes - 591 Maple St./Business 41, Peshtigo, WI 54157